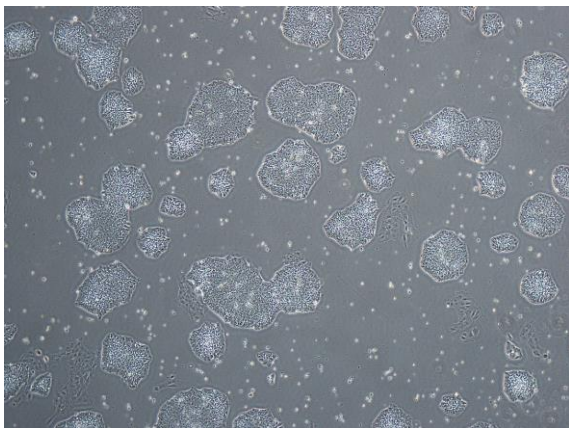
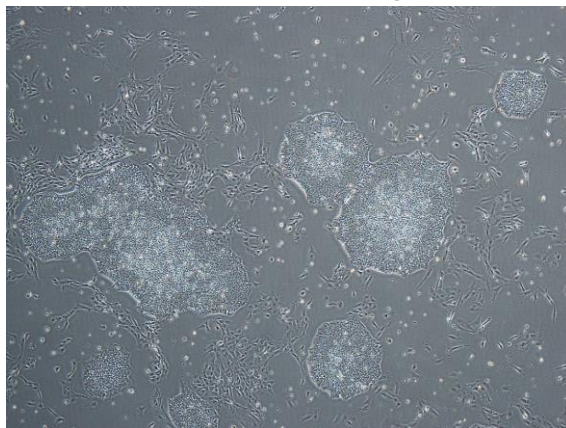


【 CiRA-j-1016 】 Morphology of iPSC colonies

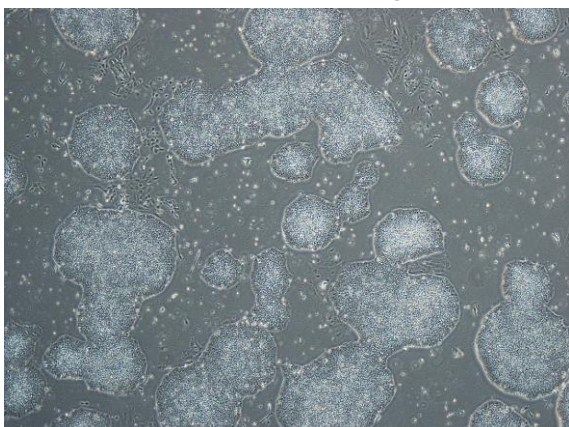
CiRA-j-1016-A: passage-2



CiRA-j-1016-B: passage-2



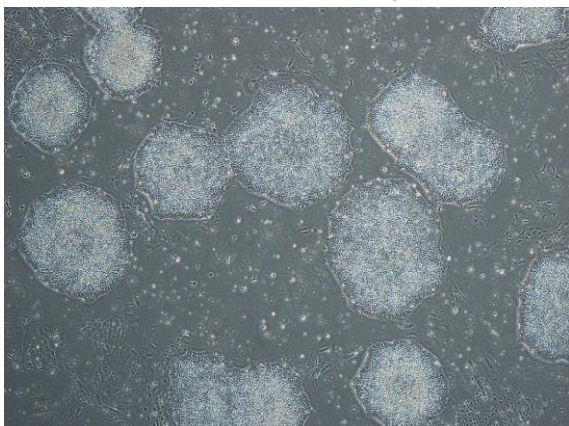
CiRA-j-1016-C: passage-2



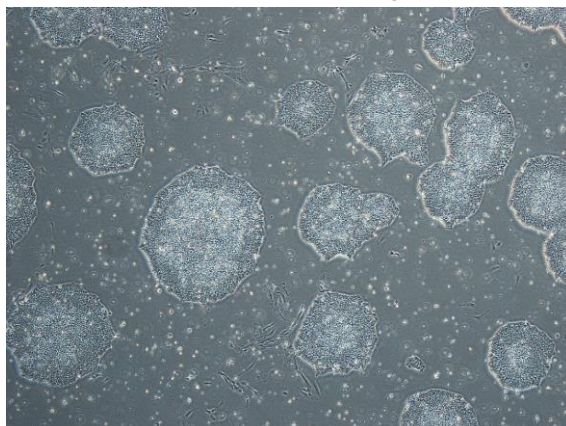
CiRA-j-1016-D: passage-2



CiRA-j-1016-E: passage-2



CiRA-j-1016-F: passage-2



(All images were captured at 4x magnification)